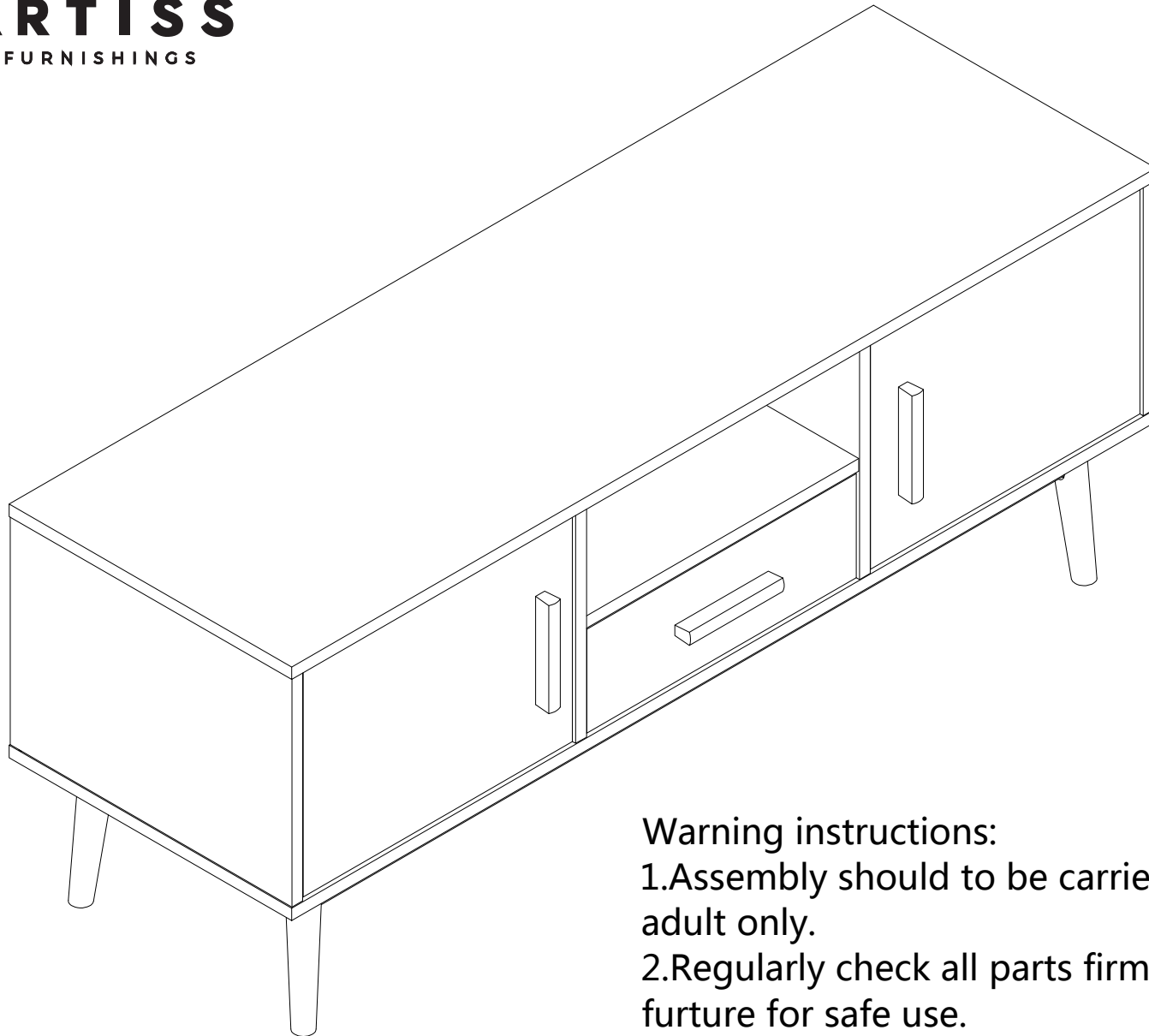


MODEL: FURNI-G-CHIC-TV-WH-WD



Warning instructions:

- 1.Assembly should to be carried out by a competent adult only.
- 2.Regularly check all parts firmly fixed to ensure the furniture for safe use.
- 3.Wipe clean only.

Assembly checklist



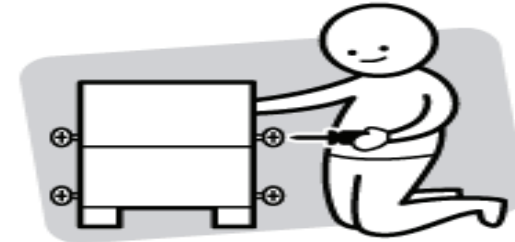
Read through the instructions carefully before you begin.



Make sure you have all the required tools.
Do not use power tools.



Identify and lay out all of the components before you begin assembly.



Do not fully tighten all screws until step/
process finished.

Useful Information

! Never use power tools, they can damage your components or hardware if used incorrectly.

! The most common mistakes made during assembly are using the wrong hardware or getting components back to front.

! Always use a soft surface (such as carpet or cardboard) when assembling your product to avoid scratching or damaging the surface of the product.

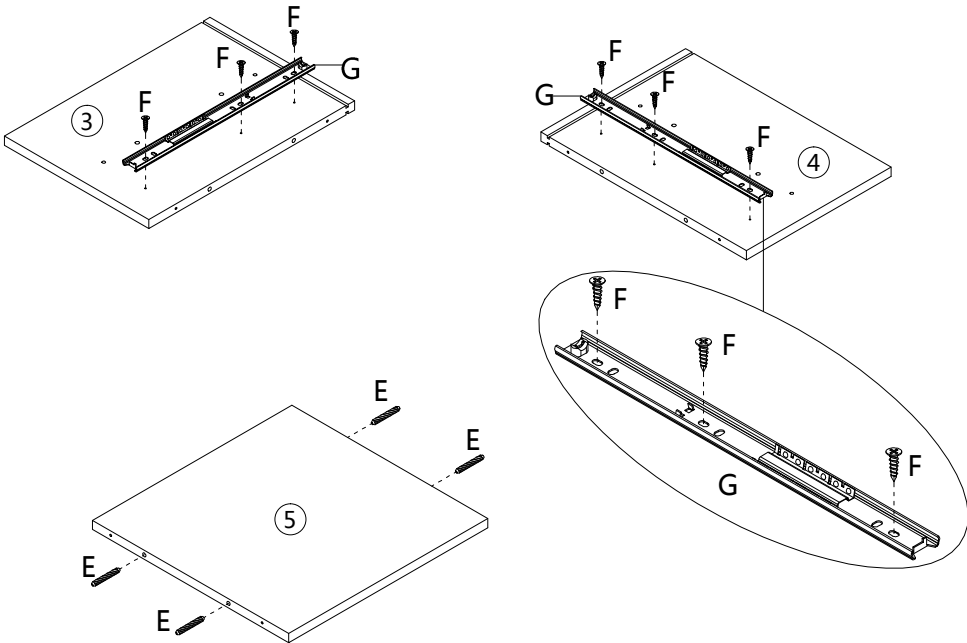
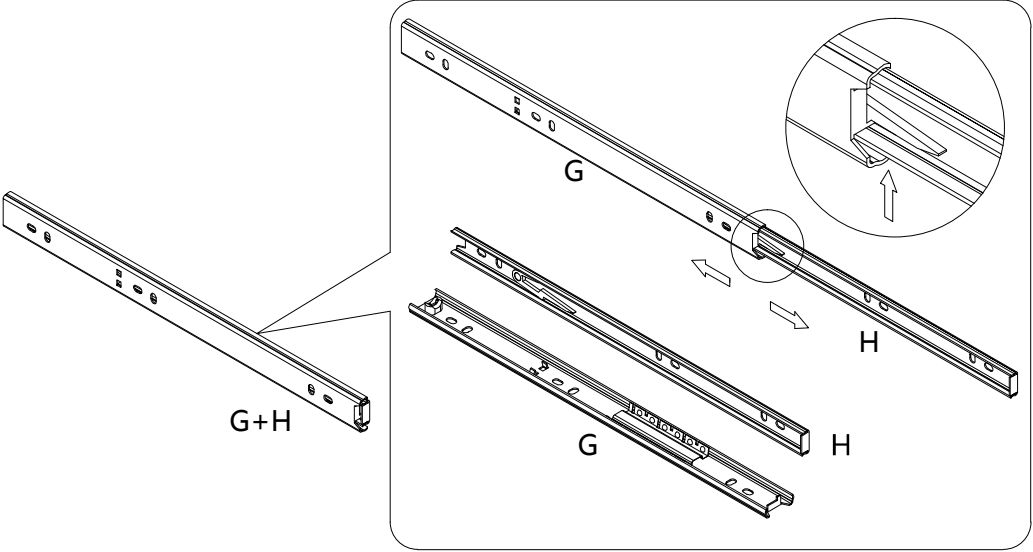
Exploded view diagram of a wooden cabinet assembly. The components are labeled as follows:

- 1: Top panel
- 2, 3, 4, 5, 6, 7, 8, 9: Side and back panels
- 10: Legs
- 11: Horizontal support bars
- 12, 13, 14, 15, 16: Drawer components
- A: Cabinet handle

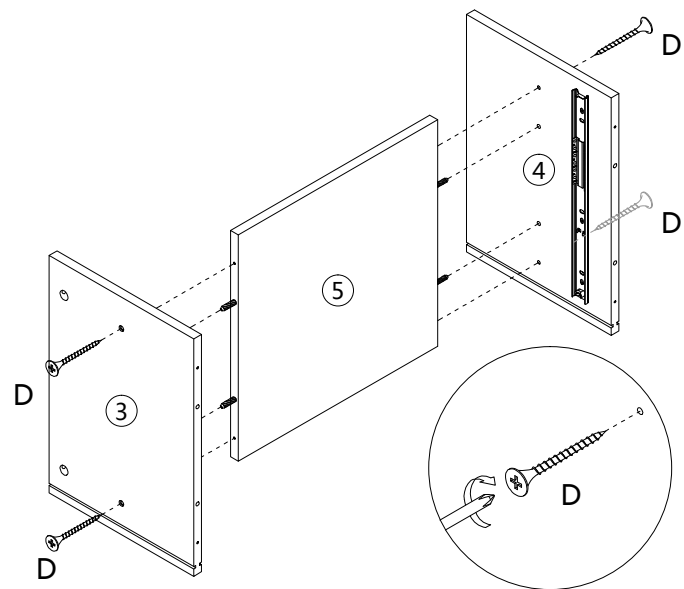
Hardware components and their quantities:

B 10PCS	C 10PCS	D 30PCS	E 26PCS	F 16PCS	G 2PCS	H 2PCS
I 2PCS	J 2PCS	K 6PCS	L 3PCS	M 4PCS	N 4PCS	O 1PC
P 24PCS	Q 4PCS	R 1PC	S 1PC	T 4PCS	U 6PCS	V 2PCS
W 2PCS	X 2PCS	Y 2PCS	Z 2PCS	AA 2PCS	AB 2PCS	AC 2PCS

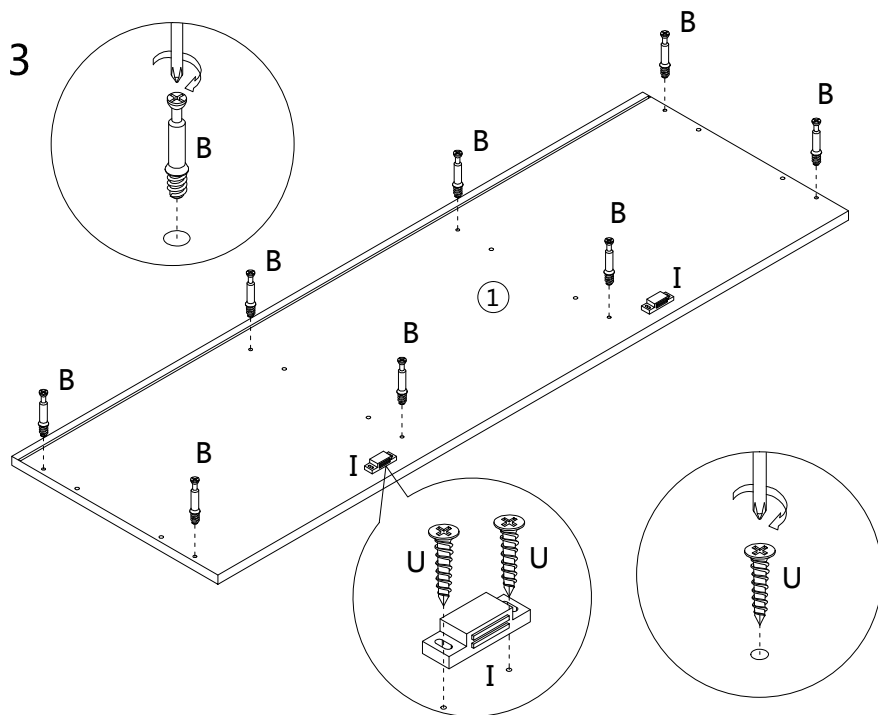
step 1



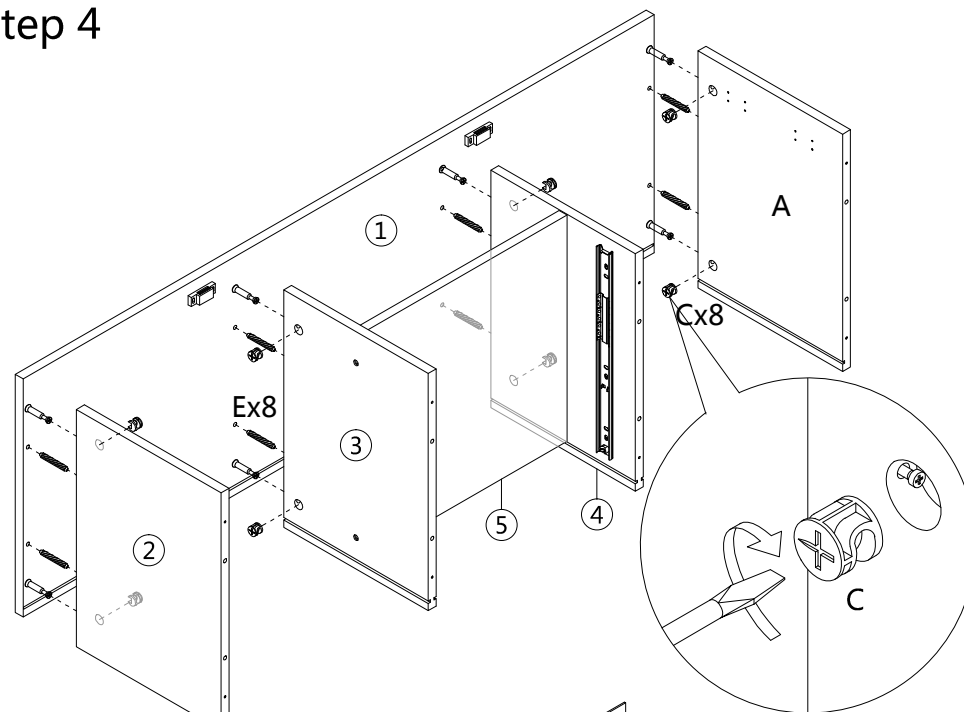
step 2



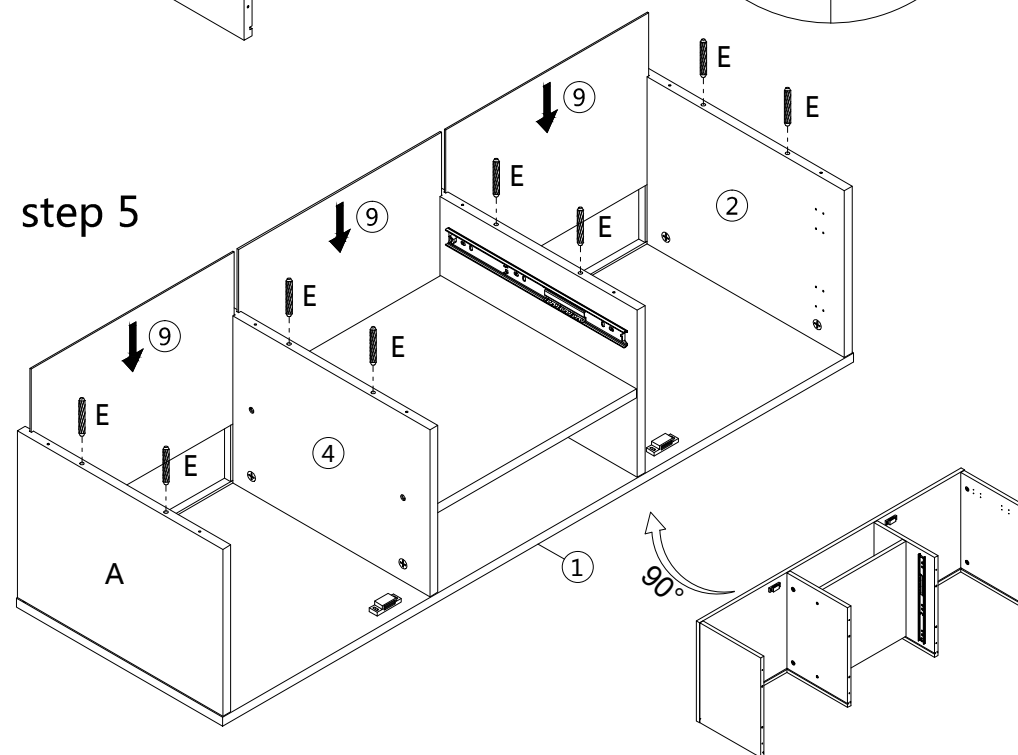
step 3



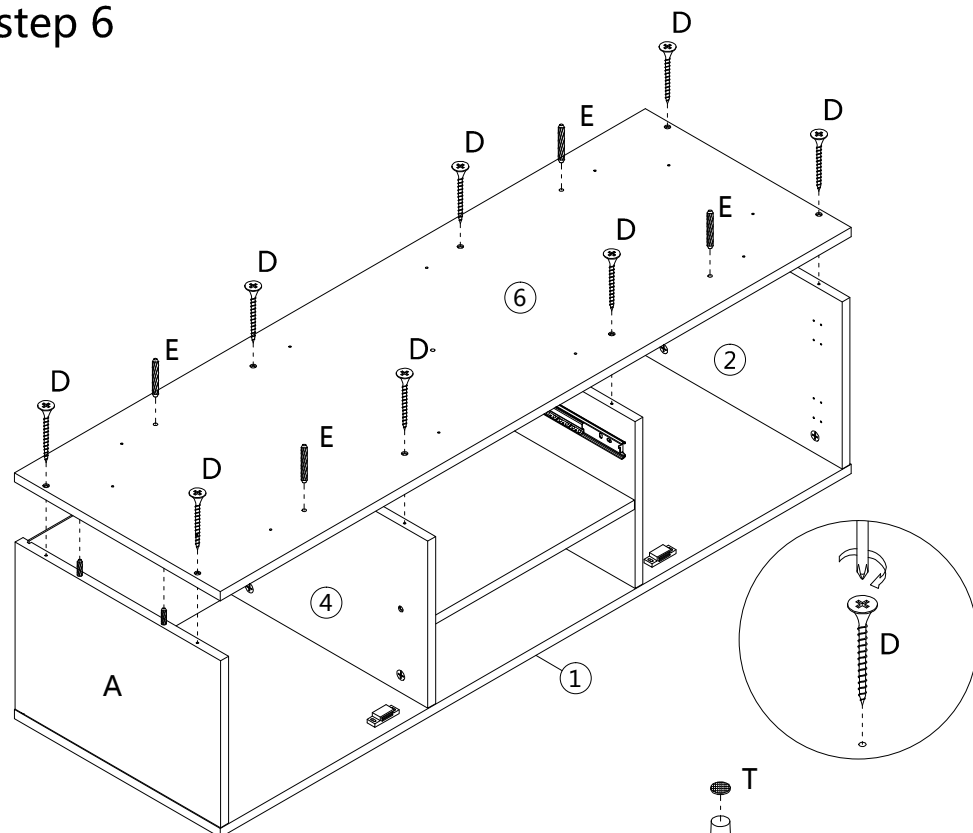
step 4



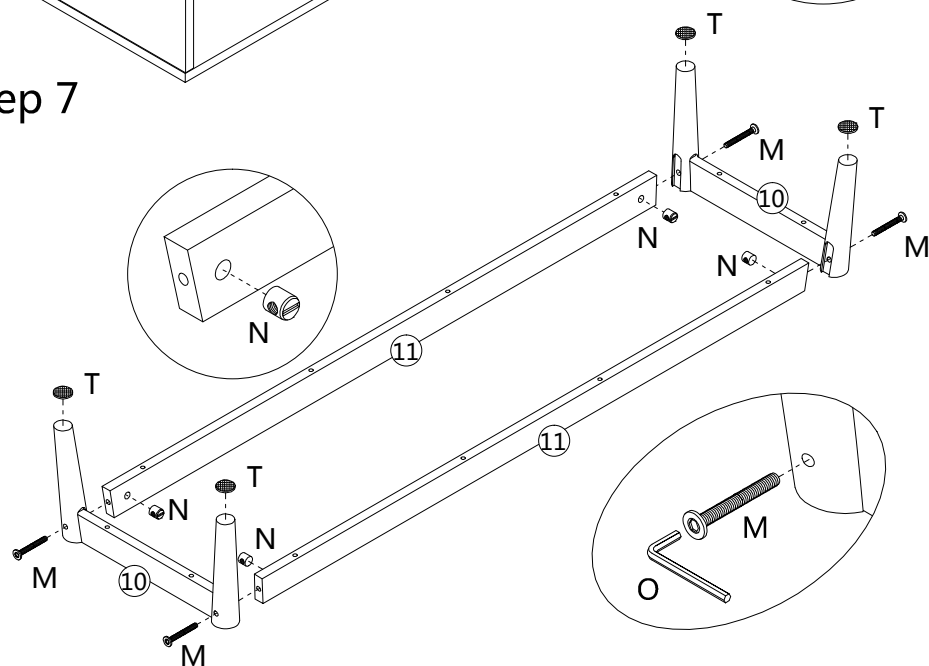
step 5



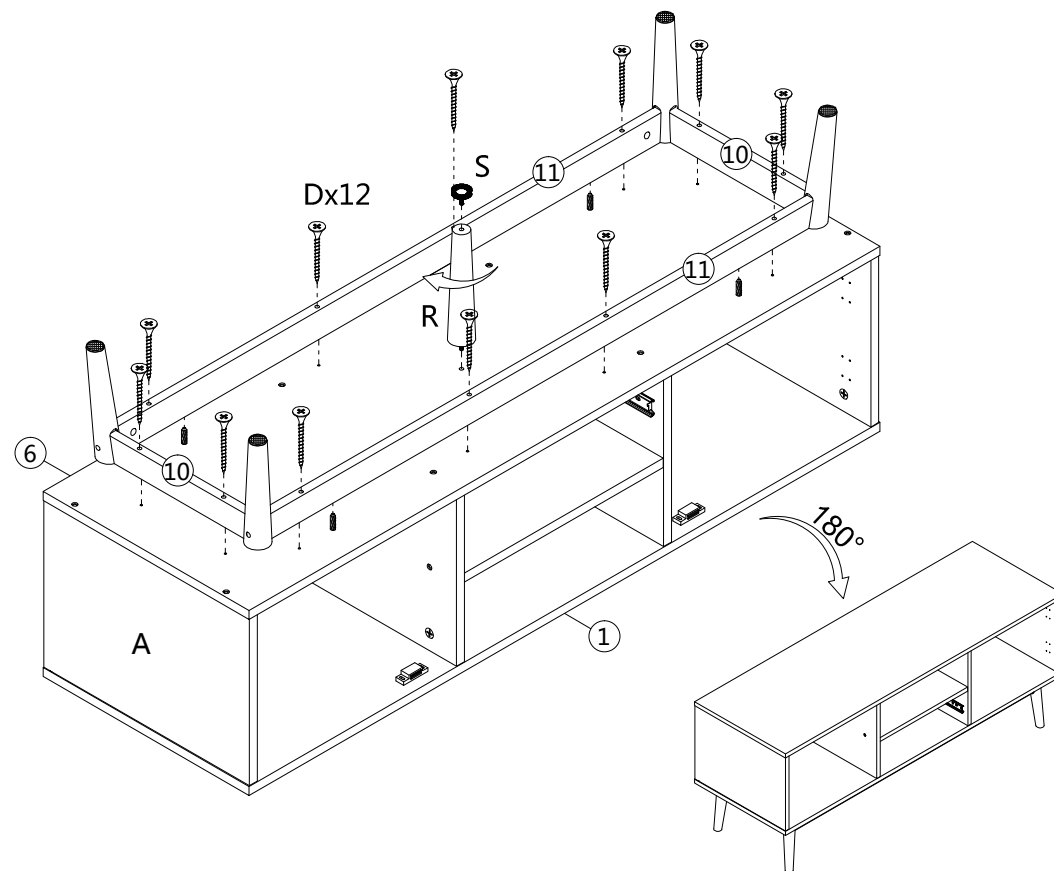
step 6



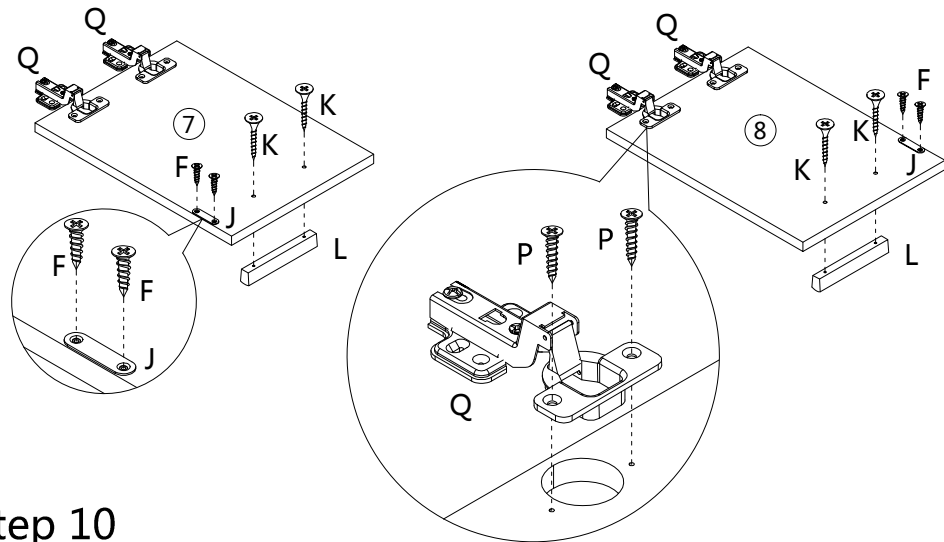
step 7



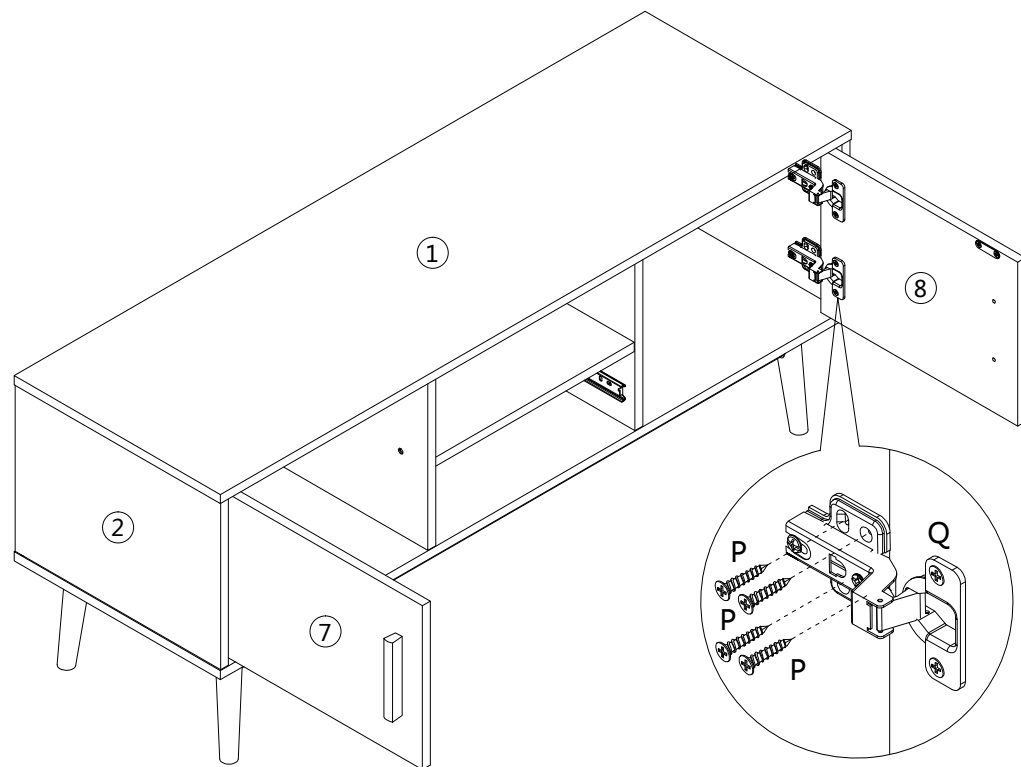
step 8



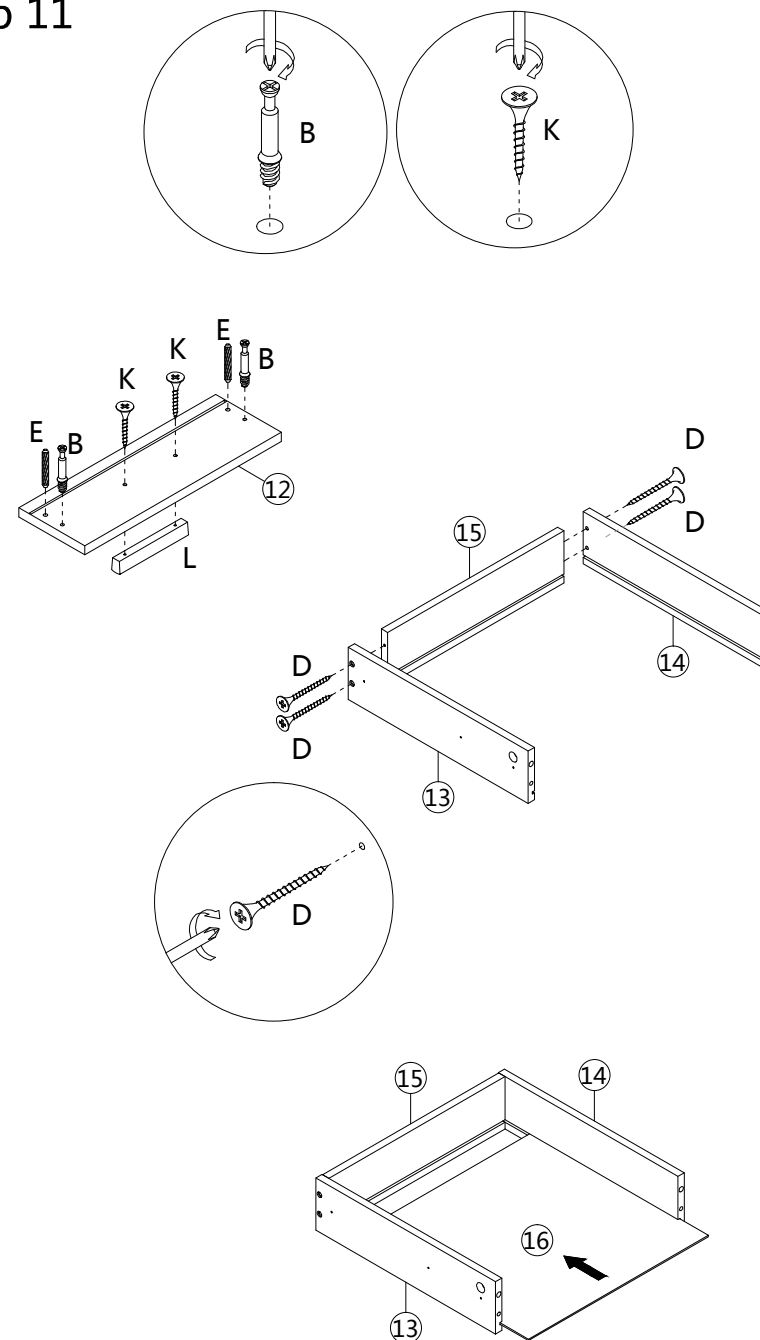
step 9



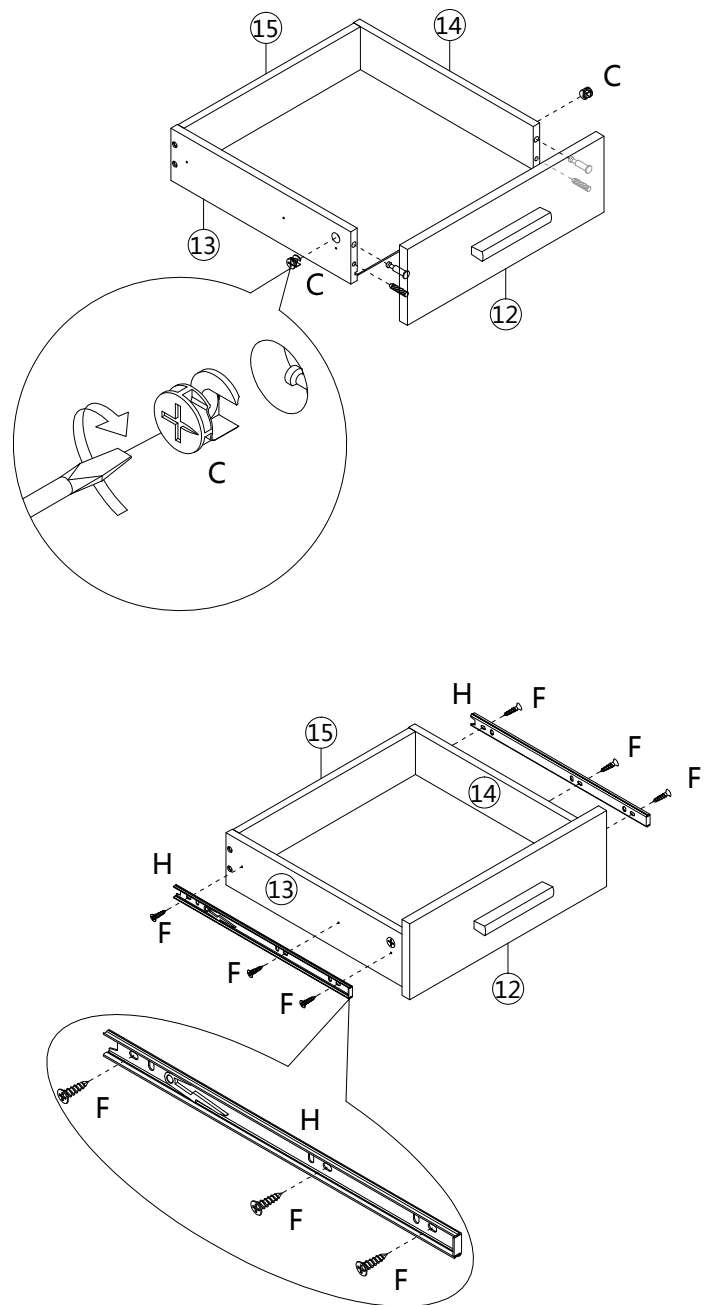
step 10



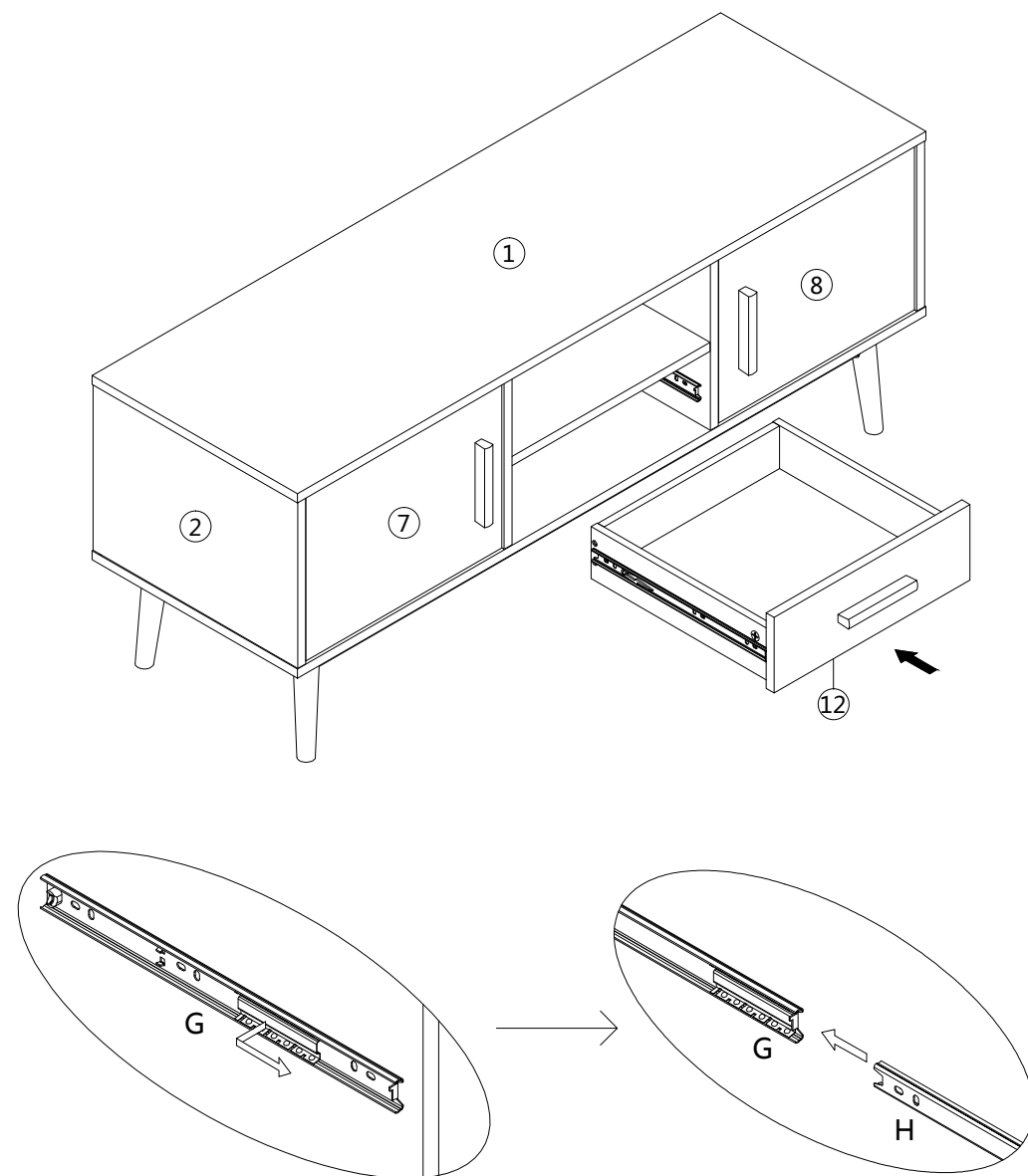
step 11



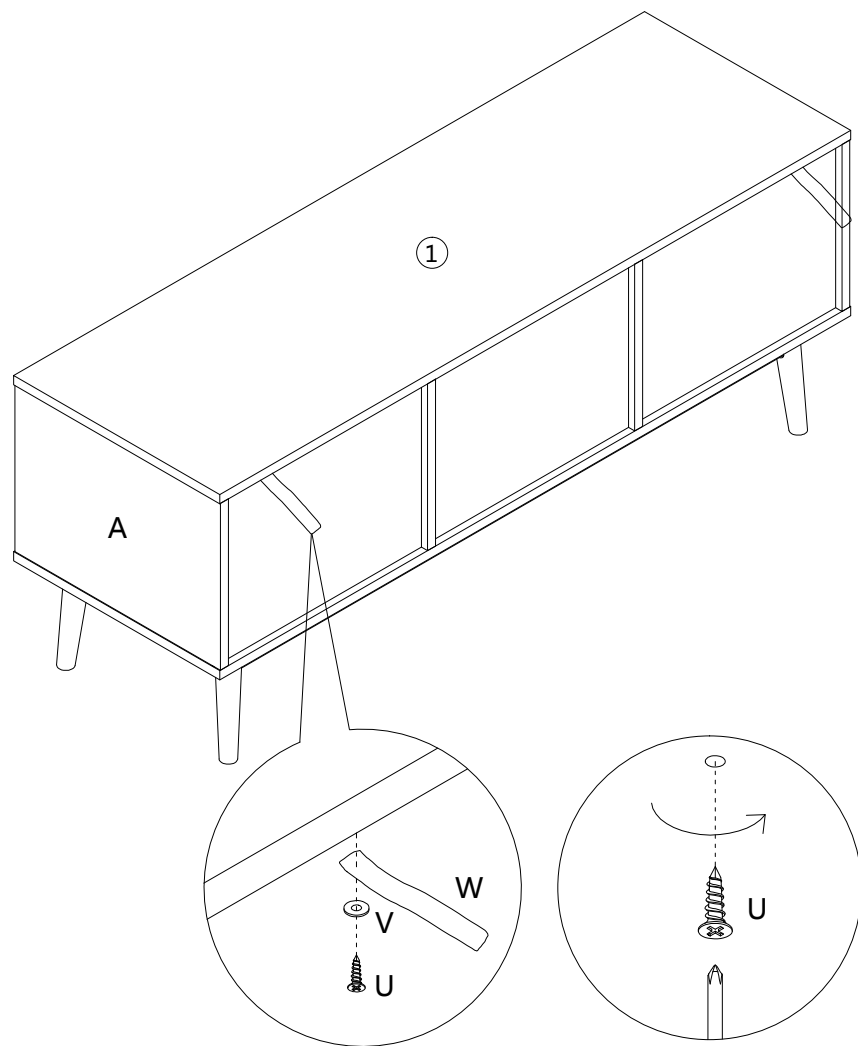
step 12



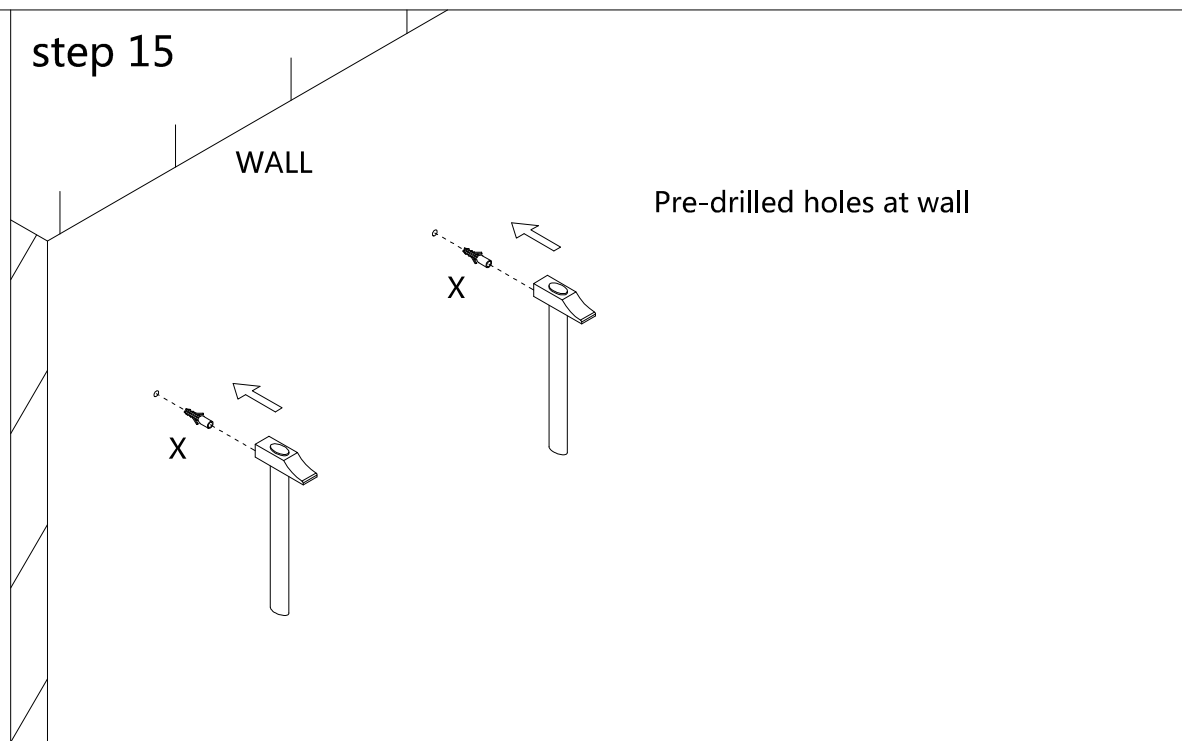
step 13



step 14



step 15



step 16

